

POTENTIAL DEVELOPMENT FIGURES

TOTAL AREA	47.36 AC.
UTILITY CORRIDOR	8.07 AC.
EX. INFRASTRUCTURE	3.70 AC.
FAIRWAY VIEW LINE	1.80 AC.
PROPOSED BUILDINGS	8.80 AC.
CONCRETE ROADWAY	3.80 AC.
NET AVAILABLE AREA	18.46 AC.

TOTAL AVAILABLE LOTS: 33 LOTS (148,621.71 ± SQ. FT.)

AREAS WITH NO BUILDING FOOTPRINTS: 38.23 AC.

PORTION OF SITE OF FAIRWAY VIEW LINE: 1.80 AC.

PROPOSED: 33 LOTS

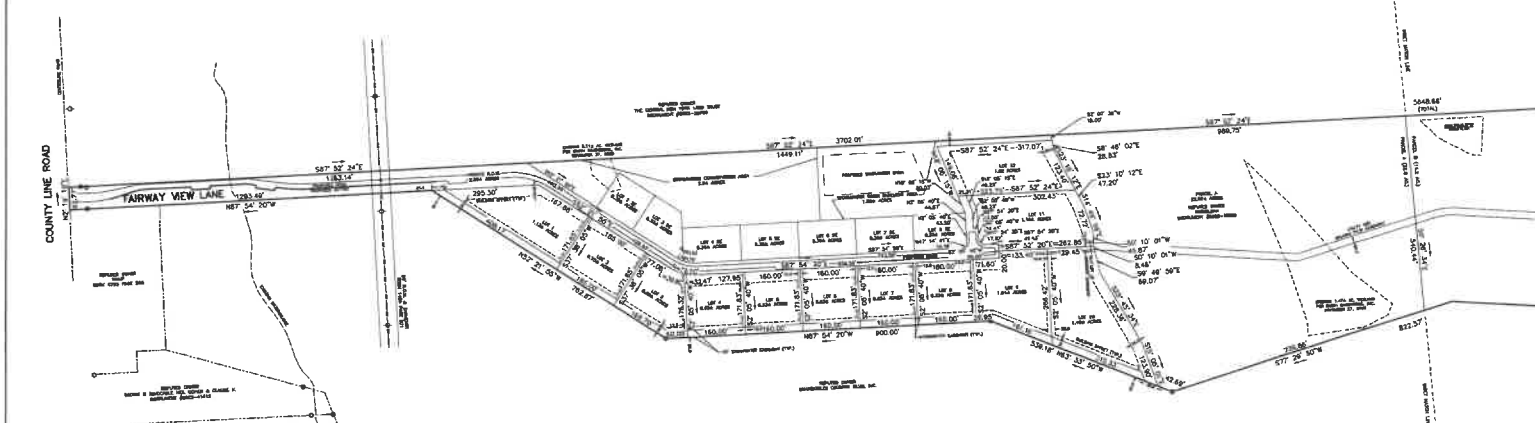
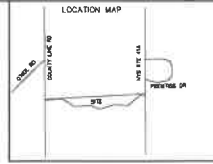
PROPOSED ROADWAY: 3.80 AC.

LOTS: 33

TOTAL DEVELOPED: 33.80 AC. (71%)

CONSERVATION AREA: 33.80 AC. (71%)

AREAS NOT DEVELOPED AT THIS TIME:



APPROVED TOWN OF SKANEATELES

APPROVED SCOTT L. WAGLEMAN

APPROVED WENDY ELLIEN WAGLEMAN

LEASING:

- CONCRETE ROADWAY PAVEMENT
- ROAD PAVEMENT
- ROAD SIDE FURROWS
- ROAD SIDE SET
- UTILITY POLES

1. TOTAL AREA: 47.36 AC.

2. TOTAL NUMBER OF LOTS: 33

3. LOTS 1-33 SUBMITTED AND APPROVED BY THE TOWN OF SKANEATELES

4. LOTS 1-33 SUBMITTED AND APPROVED BY THE TOWN OF SKANEATELES

5. LOTS 1-33 TO BE SITED BY 7000 SQUARE FEET

6. LOTS 1-33 TO BE SITED BY 7000 SQUARE FEET

7. LOTS 1-33 TO BE SITED BY 7000 SQUARE FEET

8. LOTS 1-33 TO BE SITED BY 7000 SQUARE FEET

9. LOTS 1-33 TO BE SITED BY 7000 SQUARE FEET

10. LOTS 1-33 TO BE SITED BY 7000 SQUARE FEET

APPROVED TOWN OF SKANEATELES

APPROVED SCOTT L. WAGLEMAN

APPROVED WENDY ELLIEN WAGLEMAN

LEASING:

- CONCRETE ROADWAY PAVEMENT
- ROAD PAVEMENT
- ROAD SIDE FURROWS
- ROAD SIDE SET
- UTILITY POLES

PHASE 1
FAIRWAY VIEW SUBDIVISION

PART OF MILITARY LOT 37 TOWN OF SKANEATELES
COUNTY OF ORISKANY STATE OF NEW YORK

PAUL JAMES OLSEWICKI, P.L.L.C. PLLC
1326 NEW GENOVA TRAIL, SUITE D3
SKANEATELES, NEW YORK, 13152
315-488-5852
paul@paulolsewicki.com

REVISIONS:

PAUL JAMES OLSEWICKI, P.L.L.C. PLLC
1326 NEW GENOVA TRAIL, SUITE D3
SKANEATELES, NEW YORK, 13152
315-488-5852
paul@paulolsewicki.com

DATE: JUNE 10, 2024 SCALE: 1" = 150 FEET