
EGGLESTON & KRENZER ARCHITECTS, PC

The Trolley Bldg
1391 East Genesee Street
Skaneateles, New York 13152

November 30, 2021

Town of Skaneateles Planning Board
24 Jordan Street
Skaneateles, NY 13152

Re: Hobbit Hollow Farms LLC – Special Permit
3061 West Lake Road
Tax ID# 51.-02-08.2

NARRATIVE

Hobbit Hollow Farms is a 95.18-acre lot with 2,401 ft of road frontage on West Lake Road and 585 ft on Benson Road and is located in the RF District in the Skaneateles Lake Watershed. It has four single family dwellings (Hobbit Hollow House and three (3) smaller homes/cottages), horse boarding barn and paddocks, agricultural fields, ponds and a watercourse. The barns also service the Falcone White Birch Vineyards across the road and a home located across the street. The Hobbit Hollow House was approved in 1996 as a Bed and Breakfast but is currently rented to single parties as a dwelling on a short-term basis. The ISC is 2.7%.

This application is to establish a seasonal Event Center which is classified as a Recreational Use, allowed by Special Permit in the RF District. The applicant offers two separate locations for a large or small tent for outside events such as weddings or parties. The event usage is offered only to parties renting the Hobbit Hollow House who are then responsible for arranging vendors to provide tents, tables, chairs, catering, port-a-johns, entertainment and valet parking for the individual events. Events may be scheduled between May 15th and October 15th. On average, there have been 6 to 7 events scheduled during the season. Events are limited to 200 people by contract and must end by 11pm. Those occur on a weekend afternoon or evening. High end port-a-johns/trailers are rented for each event.

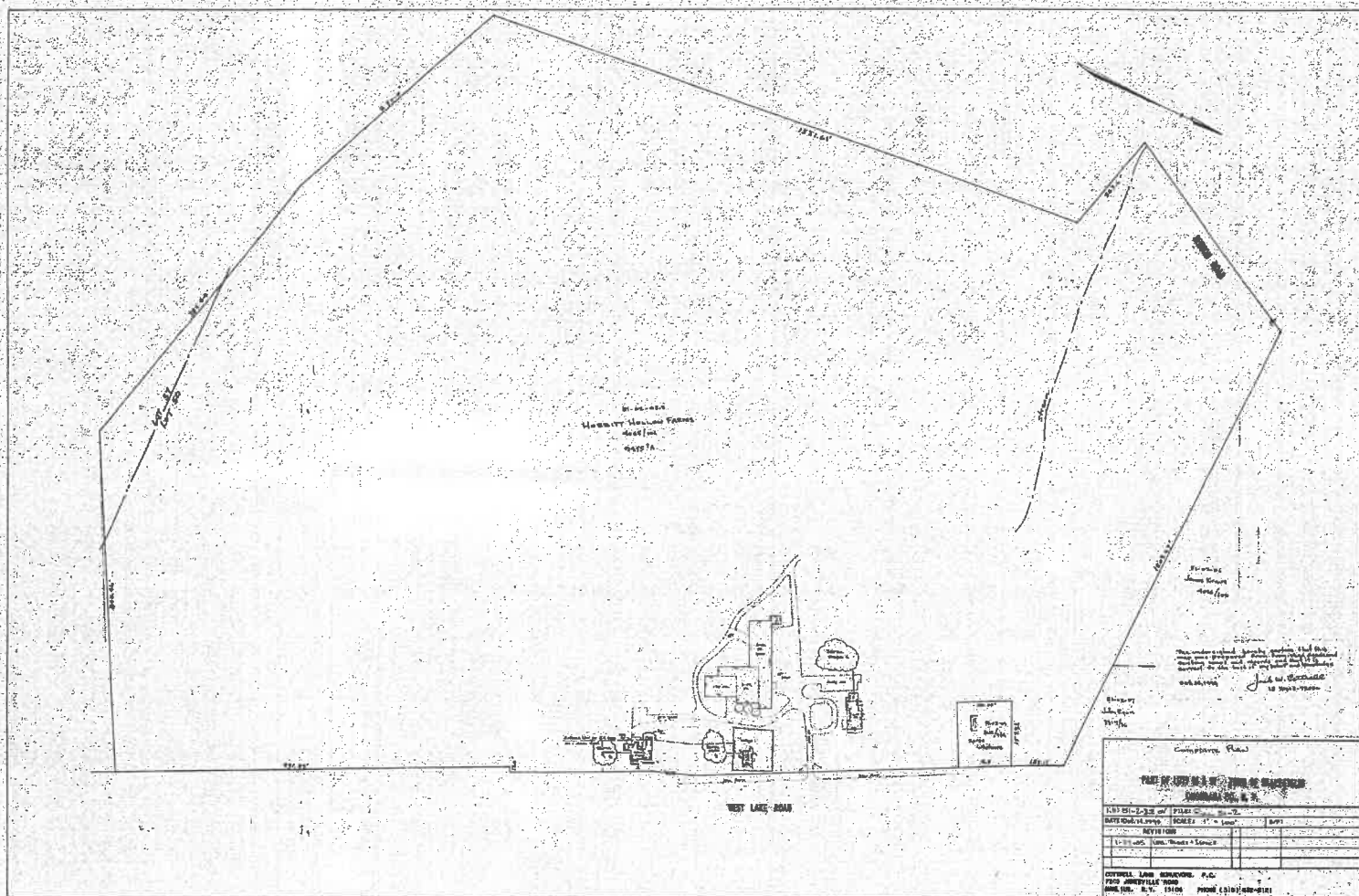
The Hobbit Hollow dwelling has an 8-car parking lot adjacent to it and 13 parking spaces are on the north side of the barn, typically used by vendors for the event. Valet parking is behind the main barn where over 66 cars can park and on the grass of the drive around the barn. This makes 87 spaces available for an event. The other three dwellings have their own separate parking areas. The additional parking on grass areas increases the ISC to 3.0%.

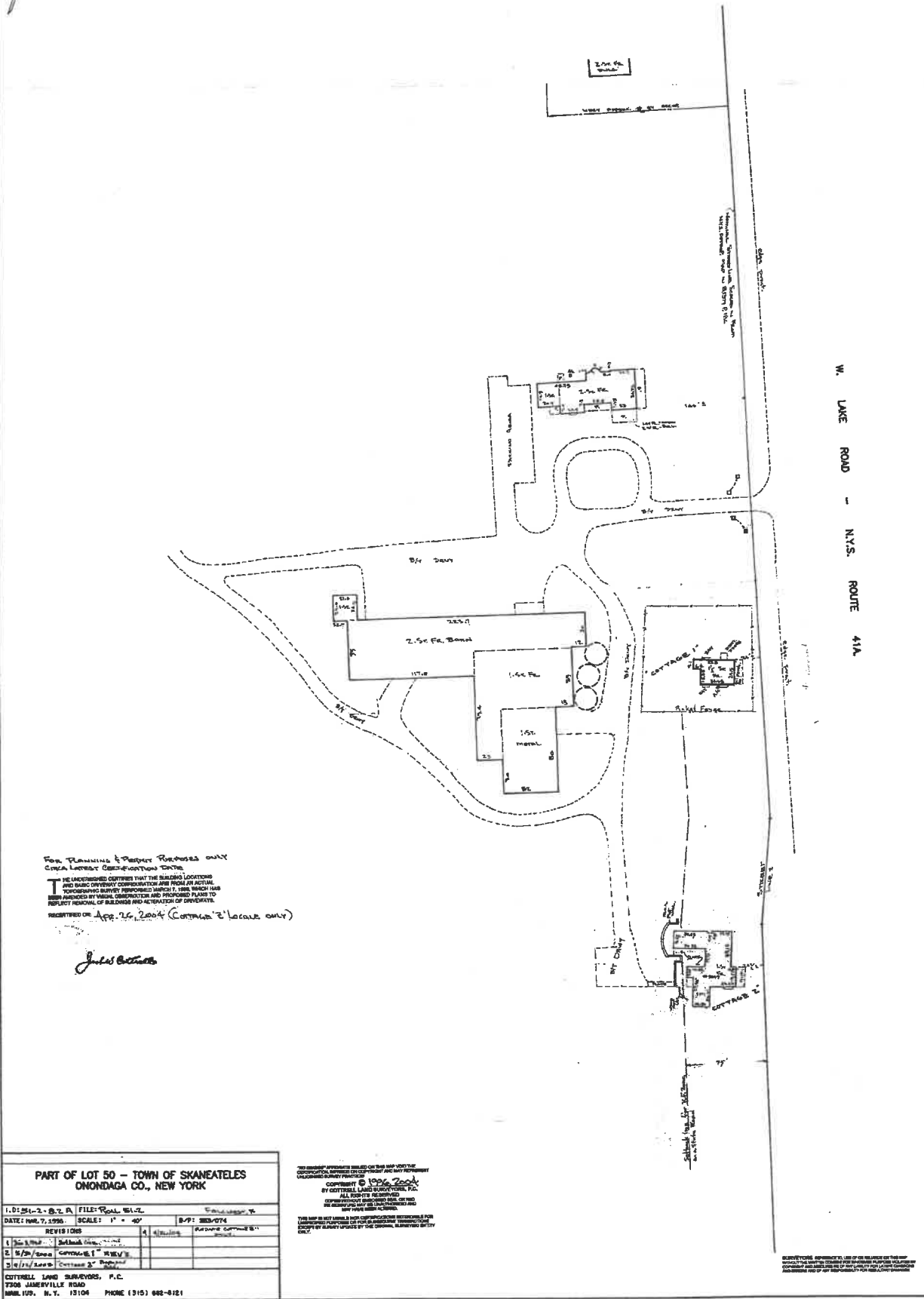
The entrance to Hobbit Hollow Farm has two stone pillars with lights. Post lights are adjacent to the Hobbit Hollow House parking area and along the driveways. The north side of the barn has a series of LED flood lights shining down on the parking areas. Other lights are on the back of the barn parking areas. For evening events the tents have lighting incorporated into them.

The main barn upper level contains a large space once used for indoor tennis. This space is not part of the Event Use and is used occasionally by the owners for private parties.

(315) 685-8144

Member of the American Institute of Architects





W. LAKE ROAD - N.Y.S. ROUTE 41A

FOR PLANNING & PERMIT PURPOSES ONLY
CIRCA LATEST CERTIFICATION DATE

THE UNDERSIGNED CERTIFIES THAT THE BUILDING LOCATIONS
AND BASIC OVERSEET CORRELATION AND FROM AN ACTUAL
TOPOGRAPIHC SURVEY PERFORMED MARCH 7, 1988, WHICH HAS
BEEN AMENDED BY VISUAL OBSERVATION AND PROPOSED PLANS TO
REFLECT REMOVAL OF BUILDINGS AND ALTERATION OF OVERLAYS.

REGISTERED ON Apr. 26, 2004 (CONTAINS 2" SCALE ONLY)

Julius C. C. C.

PART OF LOT 50 - TOWN OF SKANEATELES
ONONDAGA CO., NEW YORK

1.0: 54-2-2.2.2. FILE: 204L 54-2. Cottrell, P.
DATE: MAR. 7, 1995. SCALE: 1" = 40' B/P: 303-074

REVISED	
1 5/15/95	Detached from 204L 54-2
2 6/15/95	Corrected 204L 54-2
3 8/15/95	Corrected 204L 54-2

CUTTRELL LAND SURVEYS, P.C.
7308 JAMERVILLE ROAD
MARIETTA, N.Y. 13104 PHONE (315) 682-0121

"NO WARRANTY" APPROXIMATE BASELINE ON THIS MAP VOID THE
CORPORATION, SUPERSEDES OR CONFIRMS AND MAY REPRESENT
UNLAWFUL SURVEY PRACTICES

COPYRIGHT © 1996 *2nd*
BY GIDDRELL LAND SURVEY, P.C.
ALL RIGHTS RESERVED
COPYRIGHTED MATERIALS AND NO PART OF THIS
WORK BEING REPRODUCED OR TRANSMITTED IN ANY FORM OR BY ANY
MEANS, ELECTRONIC OR MECHANICAL, INCLUDING PHOTOCOPYING, RECORDING, OR BY ANY
INFORMATION STORAGE AND RETRIEVAL SYSTEM, WITHOUT PERMISSION IN WRITING FROM
GIDDRELL LAND SURVEY, P.C.

THIS MAP IS NOT A BASIS FOR ANY OTHER SURVEY OR RECORDS FOR
UNLAWFUL PURPOSES OR FOR ANY OTHER TRANSACTION
EXCEPT BY AGREEMENT UPON BY THE ORIGINAL SURVEYING PARTY

SURVEYORS ASSUMED NO USE OR RELIANCE ON THIS MAP WITHOUT THE WRITTEN CONSENT FOR SUCH USE. PURPOSES VIOLATED BY COPIING AND REPRODUCING OR ANY LIABILITY FOR INJURY OR DAMAGE AND OF ANY RESPONSIBILITY FOR NEGLIGENCE THEREON.

